

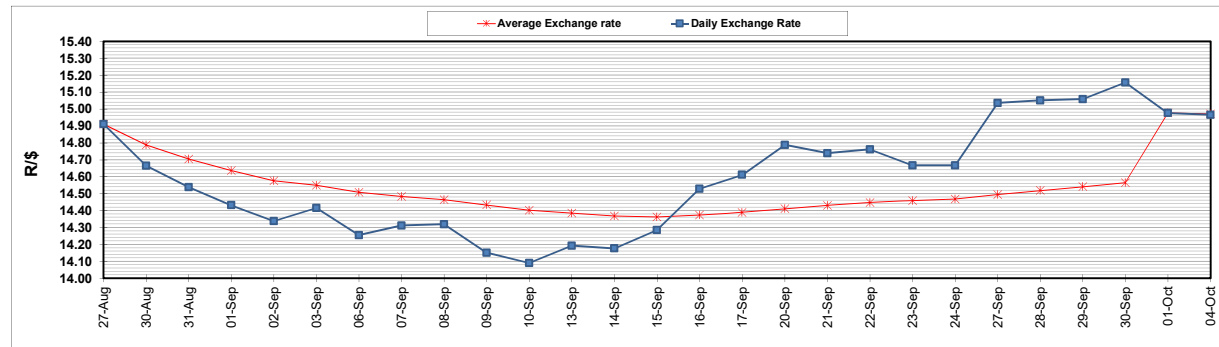
|  | PETROL 95<br>ULP | PETROL 93<br>ULP & LRP | DIESEL<br>0.05% | DIESEL<br>0.005% | ILL. PAR. |
|--|------------------|------------------------|-----------------|------------------|-----------|
| GAUTENG PUMP PRICE (SA c/l) AS FROM 06/10/2021                     | 1,833.000        | 1,800.520              | -               | -                | -         |
| WHOLESALE PRICE (SA c/l) AS FROM 06/10/2021                        | -                | -                      | 1,571.780       | 1,575.180        | 980.488   |
| SINGLE NATIONAL MAXIMUM RETAIL PRICE                               | -                | -                      | -               | -                | 1,240.000 |
| BASIC FUEL PRICE - 04/10/2021 (SA c/l)                             | 891.787          | 876.930                | 877.045         | 880.590          | 876.147   |
| PRESS RELEASE CONTRIBUTION TO BFP 01/10/2021 - 04/10/2021 (SA c/l) | 817.110          | 808.110                | 746.630         | 750.030          | 735.128   |
| UNIT OVER/(UNDER) RECOVERY - 04/10/2021 (SA c/l)                   | (74.677)         | (68.820)               | (130.415)       | (130.560)        | (141.019) |
| AVERAGE BASIC FUEL PRICE 01/10/2021 - 04/10/2021                   | 882.579          | 867.723                | 864.912         | 868.639          | 863.643   |
| AVERAGE UNIT OVER/(UNDER) RECOVERY 01/10/2021 - 04/10/2021         | (65.469)         | (59.613)               | (118.282)       | (118.609)        | (128.515) |

### ANALYSIS MOVEMENT OF AVERAGE OVER/(UNDER) RECOVERY

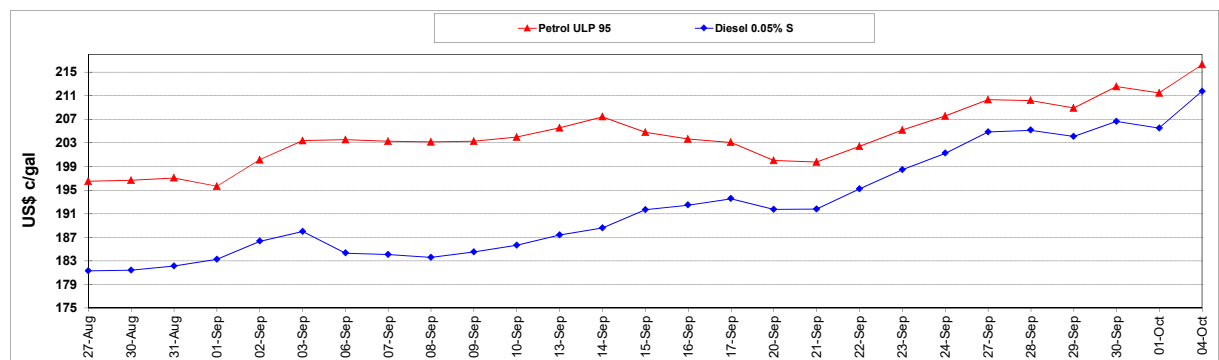
|  | PETROL 95 | PETROL 93 | DIESEL 0.05% | DIESEL 0.005% | ILL. PAR. |
|--|-----------|-----------|--------------|---------------|-----------|
| - MOVEMENT IN INTERNATIONAL PRODUCT PRICES                 | (41.587)  | (36.133)  | (94.878)     | (95.104)      | (105.145) |
| - MOVEMENT IN EXCHANGE RATE                                | (23.882)  | (23.480)  | (23.404)     | (23.505)      | (23.370)  |
| AVERAGE UNIT OVER/(UNDER) RECOVERY 01/10/2021 - 04/10/2021 | (65.469)  | (59.613)  | (118.282)    | (118.609)     | (128.515) |

### R/\$ EXCHANGE RATE - (R/\$14.9650 - 04/10/2021)

### EXCHANGE RATE USED IN BASIC FUEL PRICE



### INTERNATIONAL PRODUCT PRICES OF BASKET USED IN BASIC FUEL PRICE



### BASIC FUEL PRICE IN SA CENTS PER LITRE

